

Project Eggs Factor

Egg Chasm Crossing



Think about an egg...

Think about a chasm...

Think about how the two go together???

Think Eggstastic!

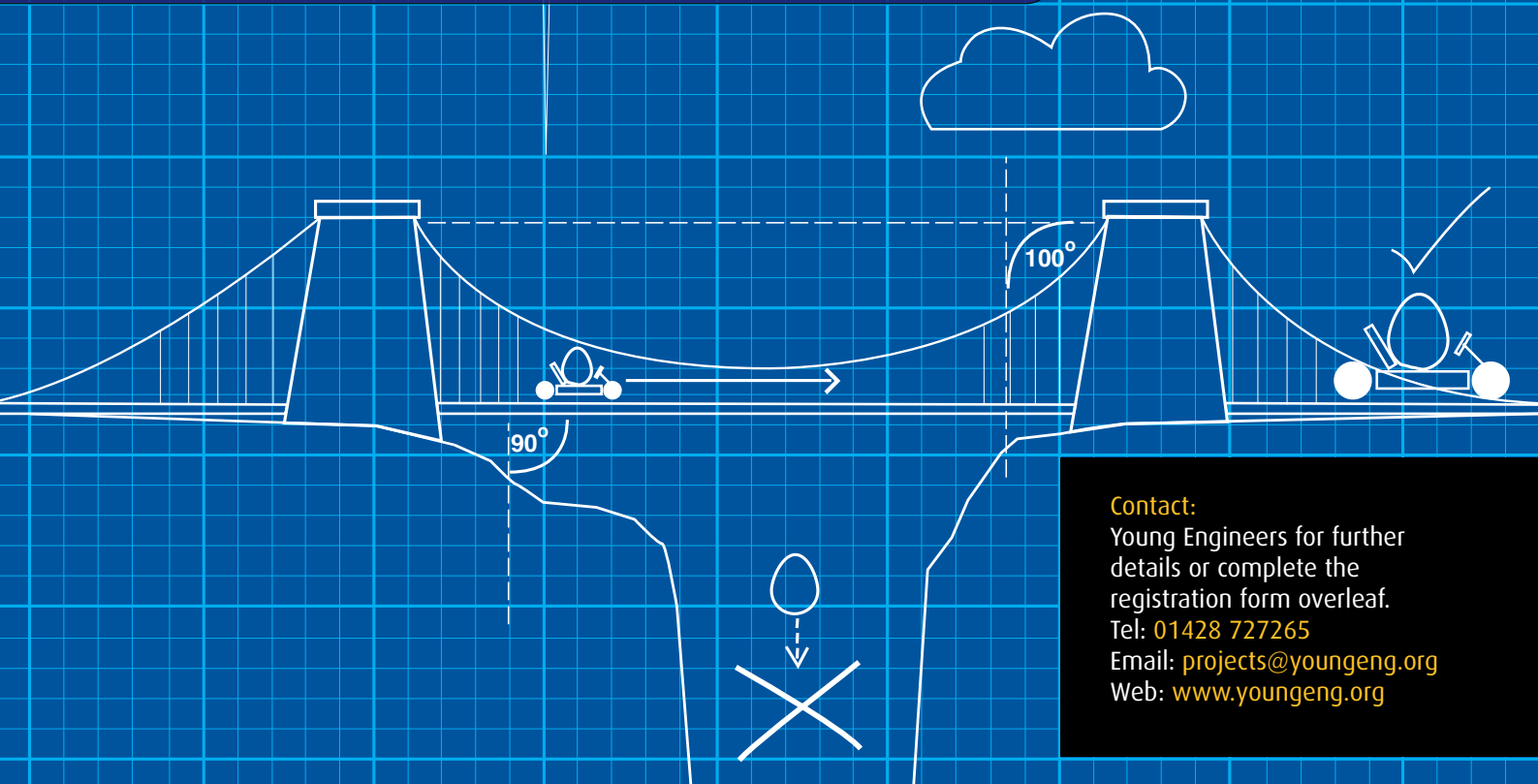
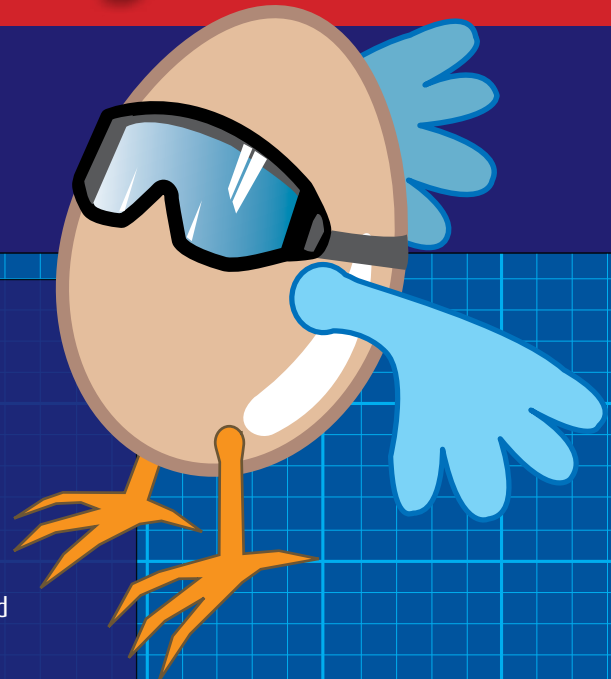
New Rules! New Criteria! New Challenge! New Rewards!

Can you rise to the height of the challenge by designing and building a method of transport capable of moving a chicken before it has its own wings?

Airbus and Young Engineers challenge you to test every part of your engineering capabilities by getting a chicken egg across a chasm!

We don't want an eggsplat we want an eggsemplary crossing!

The challenge is open to students aged 7-19 years old and is free to enter!



Contact:

Young Engineers for further details or complete the registration form overleaf.

Tel: 01428 727265

Email: projects@youngeng.org

Web: www.youngeng.org

Project Eggs Factor

Egg Chasm Crossing

Its fun, it's challenging, it's NOT flying!



The Challenge

Your task is to design and build a system that will allow a raw hen's egg to cross a 'bottomless' chasm without damaging the egg. The egg must be **picked up** on one side of the chasm and **deposited safely** on the other side of the chasm. You are not allowed to touch the egg at any time during the pick-up/crossing/set down. How the egg crosses the chasm is left to the creativity, imagination and discretion of the individual teams but the solution **MUST** have a physical structure and not be simply a catapult or rocket based solution. The egg cannot fly or be flown. The minimum width of the chasm is 1.5m.

Possible solutions might include: bridges, cranes, cantilever arms and swings. But research, imagination and the creative use of the allowed materials will invariably yield other effective solutions.

Egg Crew

Project Eggs Factor is free to enter and is open to all UK school students age 7 to 19. Students may work as individuals or in teams of up to 4 members. Family or friend groups may include one adult as part of a team. Young Engineers Clubs, schools or other youth groups may only enter students. There is no limit as to how many students or teams a school or group may enter. Teams must consist of students within their own age category.

Think of a name for your team and register your Egg Crew with Young Engineers using the form on this page or online at: www.youngeng.org.

Once registered you will be supplied with:

- Official list of approved crossing materials
- Full chasm criteria and dimensions
- Point scoring system and prize details.

Age Categories

Age Group 3	Primary	KS2 or equivalent	7-11 year olds
Age Group 2	Secondary	KS3 or equivalent	11-14 year olds
Age Group 1	Secondary	KS4/5 or equivalent	14-19 year olds

Initial Chasm Criteria

- There is no limit upon the number of team or individual entries.
- The chasm is deemed to be bottomless; the egg must not touch the 'floor of the chasm' nor may any part of your egg transport system.
- Your solution must meet the criteria specified for your age group.
- Only products shown in the 'List of Approved Materials' may be used.
- All journeys must be verified by an independent adjudicator.
- All teams must agree to be honest in their endeavours.
- To qualify for awards and a place on the Egg Crossing Board, teams must provide video footage of their crossing to Young Engineers.
- Entries that meet the full Chasm Criteria (available upon registration) will be eligible for end of term and end of year awards.
- An Egg Crossing Leader Board on the Young Engineers website will record results and video footage.

Point Scoring & Prizes

A judging panel will review and award points to each entry, a total score will be posted on the Egg Leader Board along with supporting video footage. At the end of the year, the six highest scoring entries in each age category will be reassessed to determine their final end of year score.

There will be prizes for the highest scoring entry for each age category at the end of each team and an end of year overall winner.

Egg Timetable

Term closing dates for video footage:

Term 1 19th December

Term 2 18th April

NB: Special National Science and Engineering Week Entries - All of March

Term 3 20th July

All end of term dates will finish at 17.00 UK time. All entries received after the end closing date will be carried forward to the next term and be added to the Egg Leader Board!

Registration Form

Please complete in BLOCK CAPITALS. All boxes should be completed. Further information is emailed to the contact email address.

Contact Details

Name of Organisation (school etc)

Contact address

Town

Postcode

Tel

Email

Contact Adult

Full Name

Personal Email Address

Entries

Age Category:

Number of students:

Number of teams:

NB: Please complete a separate form for each age category.

Is this a school, youth group, home based entry or other?

Where did you hear about this challenge?

Signed

Print Name

Date

Please scan or photocopy this form and post, fax or email to:

Projects Team, Young Engineers, Chilltree Manor, Liphook, GU30 7AZ

Tel: **01428 727265** Email: projects@youngeng.org Web: www.youngeng.org